



# hanit – heavy-duty products for mobile units

[www.hanit.eco](http://www.hanit.eco)



## Benefits at a glance

### A smart solution for people and the environment

#### ○ Lightweight and indestructible

hanit is easy to use and install, meaning changes on-site are no problem at all. Thanks to its low weight, it is lighter than stone or concrete and can therefore be transported, lifted and positioned for your structure even more easily. hanit can be sawn, milled, drilled and planed using conventional tools if required and is similar to wood in terms of how it can be processed.

#### ○ Maintenance-free & weather-resistant

Wind and weather do no damage to hanit, as it is weather-resistant and weatherproof and can be used outdoors all year round. It repels moisture and does not absorb water. hanit is also rot-proof and can also be used directly in or on the ground. It does not need to be impregnated, painted or maintained.

#### ○ Environmentally friendly & pollutant-free

hanit is free of toxins and harmful substances and is extremely resistant to oils, alkalis, acids and saltwater. Laboratory tests also confirm that hanit is 100% food-safe. It is manufactured without impregnation, reduces landfill and protects the environment long-term, as it is made 100% from recycled plastic.

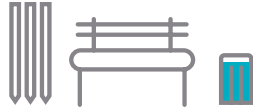
Our raw material – hanit pellets, made from perishable packaging materials



hanit is used to make a wide range of approx. 2,000 products. We would be delighted send you our full catalogue with our other products of interest.

# Using mixed plastics

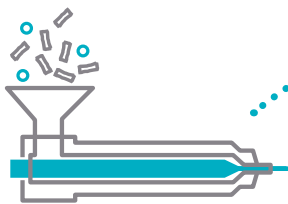
with expertise



To produce a wide range of products.  
When they are no longer being used at some point in the future, they can be **recycled again** easily – and the cycle starts all over again.



It all starts in private households.  
This is where the packaging is put in recycling bins...



The pellets are melted and injected into moulds.  
We sometimes also add colour to the plastic melt.



... or collected in yellow bags.



The content is transported to sorting plants.



We use the bales to make pellets – our recyclable **hanit** material.



This is where the packaging is separated into raw materials (e.g. tinplate and plastics). Unsuitable leftover materials are removed.



The plastic packaging is compacted into bales and delivered to **HAHN Kunststoffe**.

## German, Austria, Switzerland



**Peter Bichler**

M +49 175 8093988  
peter.bichler@hanit.de



**Andreas Brückmann**

M +49 151 54296065  
andreas.brueckmann@hanit.de



**Stefan Löwe**

M +49 160 98997917  
stefan.loewe@hanit.de



**Norman Wieneke**

M +49 172 6535903  
norman.wieneke@hanit.de



**Kai Becker**

M +49 151 70656662  
kai.becker@hanit.de



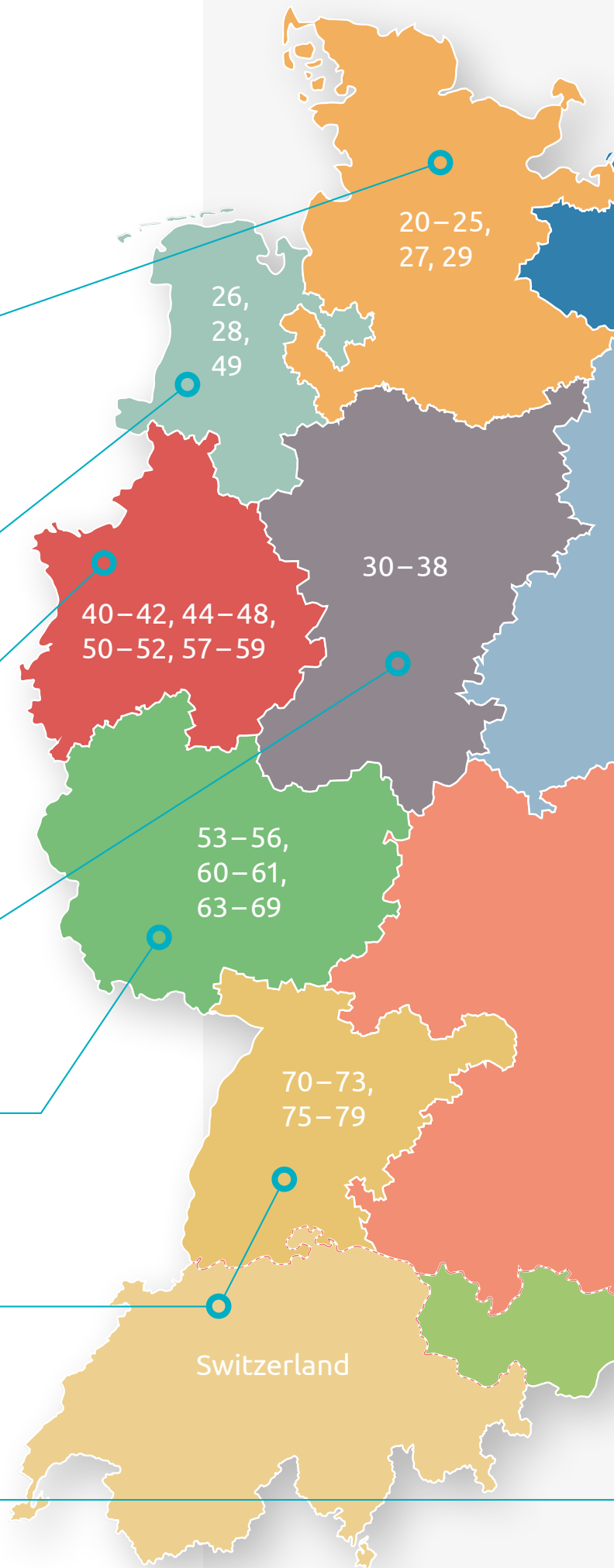
**Frank Münnich**

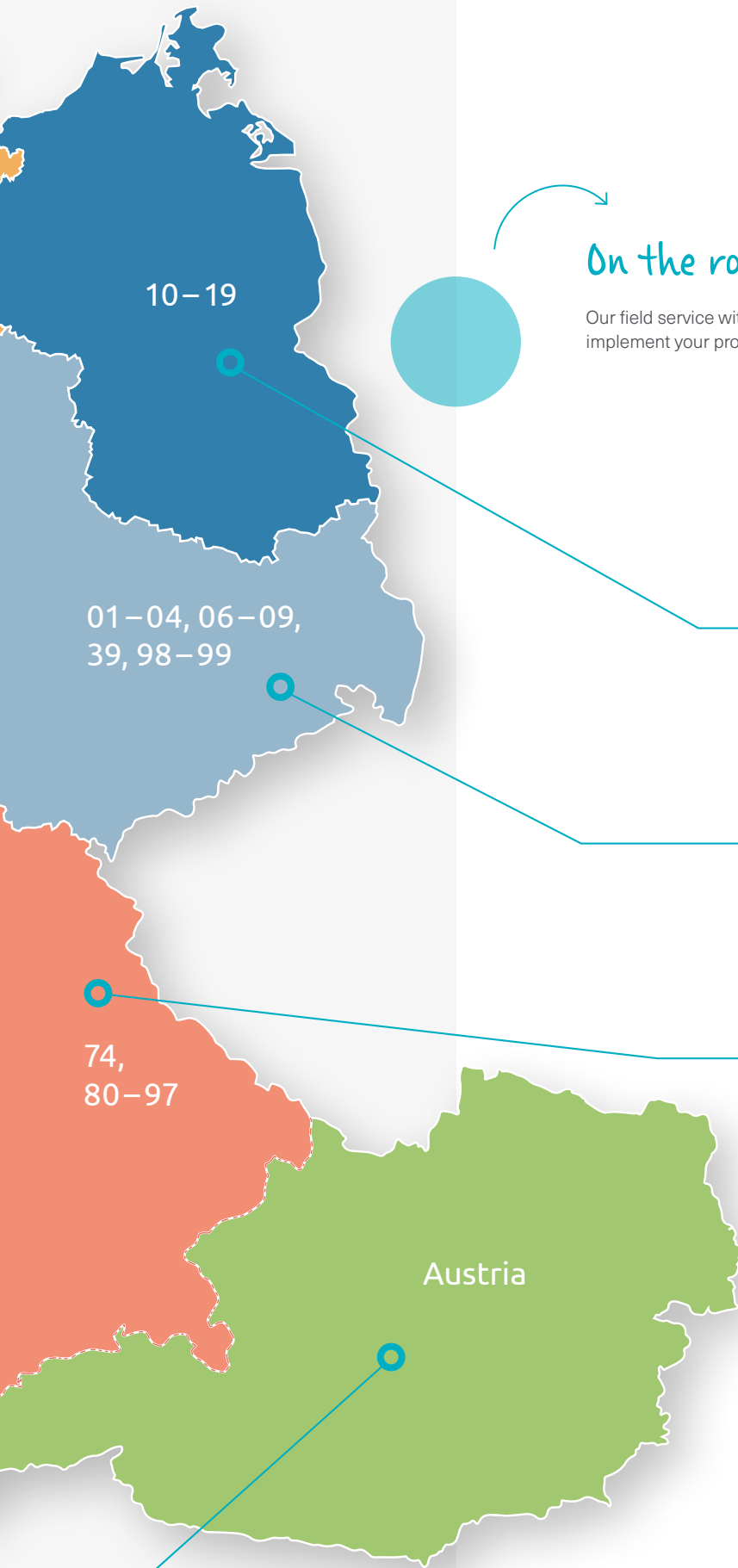
M +49 160 96797065  
frank.muennich@hanit.de



**Alexander Schürz**

M +49 151 15574489  
alexander.schuerz@hanit.de





## On the road for you. On site for you.

Our field service with regional contacts is always there for you, providing support to implement your projects, as well as advice and assistance.

**Dirk Schmidt**

M +49 170 2723120  
dirk.schmidt@hanit.de



**Sven Graser**

M +49 151 22118533  
sven.graser@hanit.de



**Daniel Kasper**

M +49 151 64825471  
daniel.kasper@hanit.de



## Scandinavia | BeNeLux

**Michael Brock**

M +45 514 46646  
michael.brock@hanit.de



## Eastern Europe

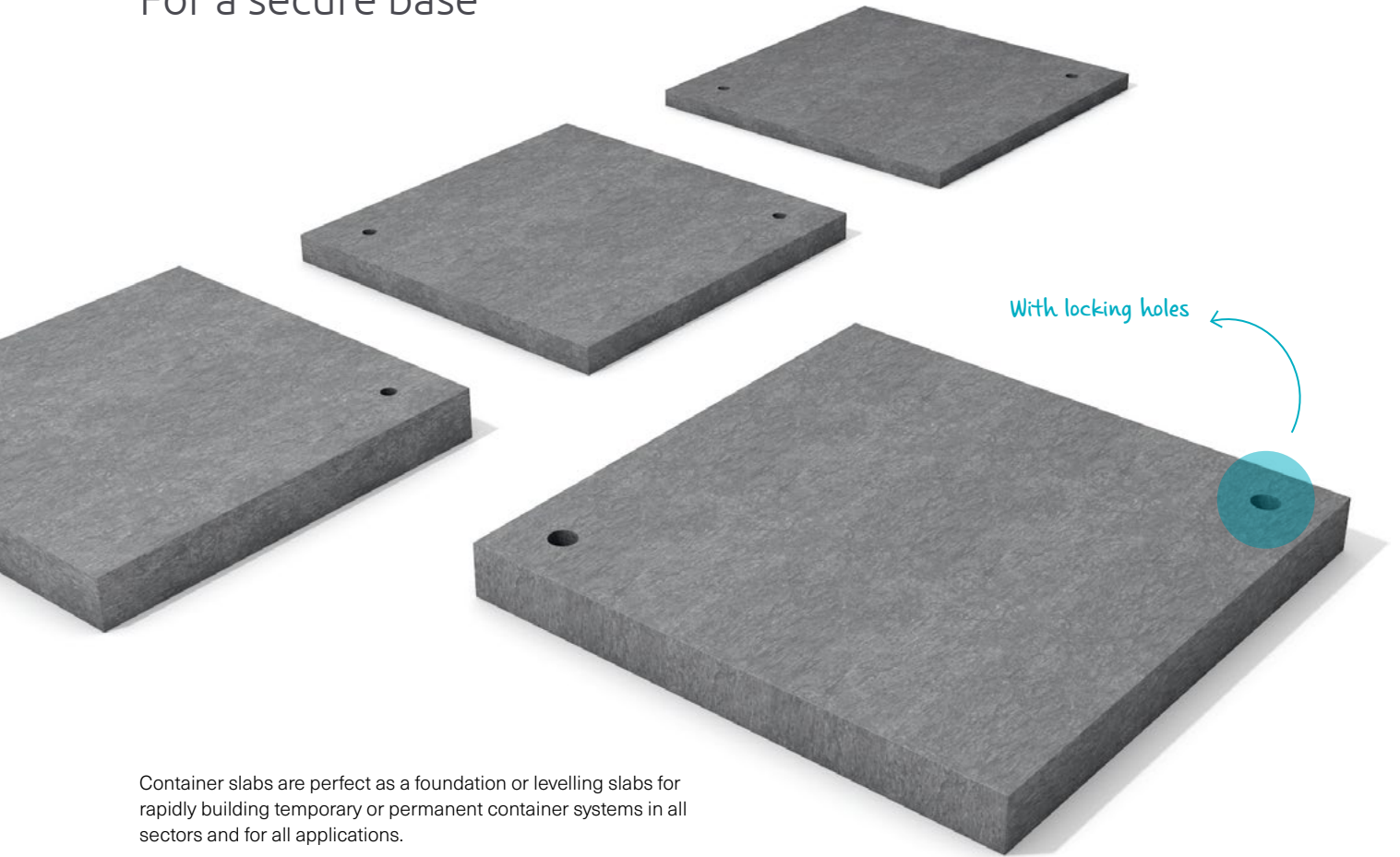
**Jaroslav Bartnik**

M +49 170 3404389  
jaroslav.bartnik@hanit.de



# Foundation pads

For a secure base



Container slabs are perfect as a foundation or levelling slabs for rapidly building temporary or permanent container systems in all sectors and for all applications.



**Product information**

- 2.5 times lighter than comparable paving slabs
- Does not require heavy equipment
- Quick and easy to install
- Lighter and more durable than concrete
- With two holes for centring and stacking the slabs
- Can be reused for various different projects

**Product dimensions**

- Thickness: 20 / 30 mm, 400 × 400 mm
- Thickness: 50 mm, 400 × 400 mm, 500 × 500 mm



Available in the following colour:



Grey



# Profiles

## The solution for every application

Profiles made of hanit can be used for a wide range of different applications, such as strip foundations and support beams. With a wide range of geometries, their potential applications are almost limitless. Thanks to high stability and load-bearing capacity, our profiles can withstand the heaviest of loads. As the material is rot-proof, hanit profiles are true all-rounders for use outdoors.



Versatile, load-bearing,  
weatherproof

## Beams



- Dimensions: 8 × 16 cm, 8 × 23 cm, 16 × 24 cm
- Lengths: from 150 cm to 300 cm
- As easy to work with as wood
- Will not ever rot or decay



Available in the following colours:



Grey

Brown

## Square profiles



Available in the following colours:



Grey

Brown

- Dimensions 4 × 4 cm to 15 × 15 cm
- 200 cm and 300 cm lengths
- Water-resistant and splinter-free
- Shock-resistant

# Flooring

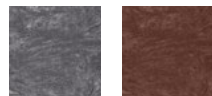
## Smart attachment

### Eco slabs



- Dimensions: Thickness: 4 cm, outside diameter: 46 cm, inside diameter: 40 cm
- Ideal for temporary use
- Ribbed structure on the bottom for greater stability
- With and without water drainage slots
- Slabs required per m<sup>2</sup>: approx. 7 slabs

Available in the following colours:



Grey Brown

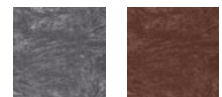
For paths, car parks and temporary surfaces: Our floorings provide stable attachment without sealing the surface. Thanks to its low weight, it is quick and easy to install – and just as easy to remove again. With very high load-bearing capacity (up to 250 tonnes per m<sup>2</sup> for Hanpave), our flooring slabs stand up to extreme requirements.

### Pre-assembled Boardwalk element



- Dimensions W × L: 100 / 120 × 100 cm
- Quick and convenient to install
- Produced from a single mould
- Plug-in system creates perfect structure

Available in the following colours:



Grey Brown

### Hanpave



Available in the following colour:



Anthracite

Seals less than 30% of the surface



- Dimension: 33.3 × 33.3 × 4 cm
- Lightweight and easy to install
- Can withstand high loads: 250 tonnes per m<sup>2</sup> with a product weight of just 0.5 kg
- Slabs required per m<sup>2</sup>: approx. 9 slabs
- Flexible marking elements e.g. to mark out parking spaces, are optionally available



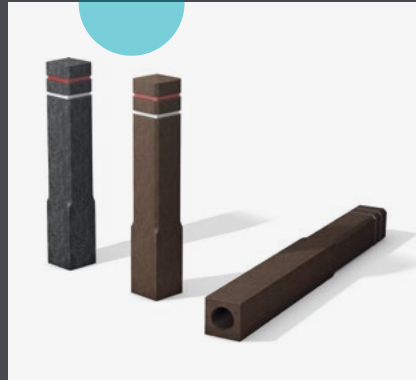


Interested in more hanit products?  
Request additional brochures or find us  
online at [www.hanit.de](http://www.hanit.de)!

Examples



Planter



Bollards



Benches

**HAHN Kunststoffe GmbH**

Gebäude 1027  
55483 Hahn-Flughafen  
T + 49 6543 9886-0  
[info@hanit.de](mailto:info@hanit.de)  
[www.hanit.de](http://www.hanit.de)



[www.blauer-engel.de/uz30a](http://www.blauer-engel.de/uz30a)

As a certified company, HAHN Kunststoffe GmbH has been entitled to use the "Blue Angel" ecolabel since 2005.

**HAHN France S.A.S.**

57320 Bouzonville, Frankreich  
[www.hanit.fr](http://www.hanit.fr)

**HAHN Plastics Ltd.**

Swinton M27 8LJ, Vereinigtes Königreich  
[www.hahnplastics.com](http://www.hahnplastics.com)

**HAHN Plastics (North America) Ltd.**

Waterloo, ON N2V 1N3, Kanada  
[www.hanit.ca](http://www.hanit.ca)

**PRECO SYSTEM S.R.L.**

33013 Gemona del Friuli (UD), Italien  
[www.plasticariciclata.it](http://www.plasticariciclata.it)

**HAHN Iberia Plástico Reciclado S.L.U.**

31210 Los Arcos (Navarra), Spanien  
[www.hanit.es](http://www.hanit.es)

**PFA Recycling LLC.**

Chesterfield, MI 48051, USA

